

# DESTINATION KISUMU

ELLA AYUGE  
IE M. ONGOWE  
UNGA BEACH  
SEP 200



A Sparkling gem lighting up as sparkling gem lighting up the shoreline to the East of the source of the Nile - Nam Lolwe (Lake Victoria), Kisumu was founded as an alternative terminus for the Uganda Railway (then under construction) to replace Port Victoria. Kisumu then became the key connection point for the caravan trail from Pemba, Mombasa and Malindi to Uganda and the Central African interior. On completion in 1901, the railway line reached the Kisumu pier, with the centre adopting the name, Port Florence. From an inland port to the first “Millennium City”, the growth of Kisumu is woven in a rich history spanning generations of cultural backgrounds: indigenous African inhabitants who occupied and roamed the gulf for generations; the European colonialists who arrived to demarcate territories to Asians who arrived with the railway line.

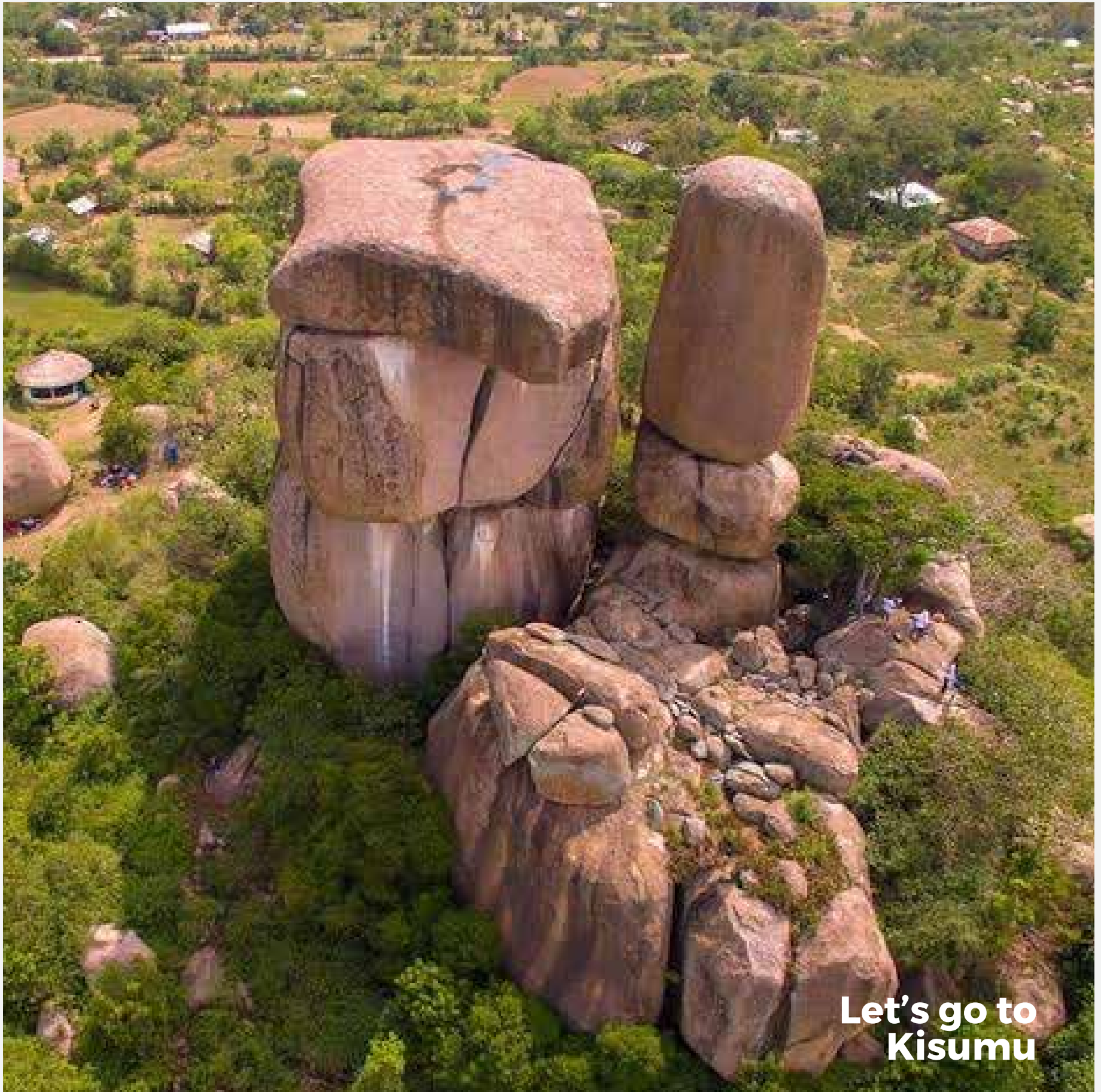
Now positioned as the principal trade gateway to the Great Lakes Region with the most important inland port in the Lake Victoria Circuit, Kisumu City holds the enviable history of hosting the first airport in East and Central Africa during the era of amphibian planes, used by the British as a link between Europe and South Africa for passenger and mail from Southampton to Cape Town.

## Culture

The diversity of cultural backgrounds that shaped the growth of Kisumu city is boldly printed on the different facets of the city; the architecture, both European and Asian as seen in Indian “Duka Wallas” on Oginga Odinga Street; religion, exemplified by the varied architecture and build of the places of worship; the Christian churches; the Sikh temples; the Muslim Mosques and the Hindu temples. The City boasts of a passionate people espousing the true spirit of culture and performing arts, hospitable and welcoming. It is home to unique cultural dance performances such as “Ramogi and Dodo” dances; Benga music, crooning romantic melodious tunes, and Ohangla music supporting the most vibrant nightlife.







**Let's go to  
Kisumu**



## Hospitality & tourism

Kisumu, one of the few African cities striding the equator, experiences sunshine throughout the year with the most amazing sunset. It lies in close proximity (30 Kms) to Kit Mikayi – a listed Unesco Heritage Site. Kit Mikayi is a 70-metre-high gravity-defying rock formation of large rocks balancing on each other with a cave underneath.

Kit Mikayi “the stone of the first wife” in Dholuo, the widely spoken language in the region has the folklore that in the past, an elderly man named Ngeso had a great love for the natural stone monument. Every morning, Ngeso would go and lie in the cave under the rock all day. He was so fascinated and consumed by this stone that his wife would often bring his breakfast, lunch, and dinner to him as he lay in the cave around the stone, or on the stone itself. He ate most of his meals there. The story goes that, one day, someone asked Ngeso’s wife where he was. The wife replied that he was at the “first wife” in reference to the stone because he spent so much of his time at the monument and loved it very much.

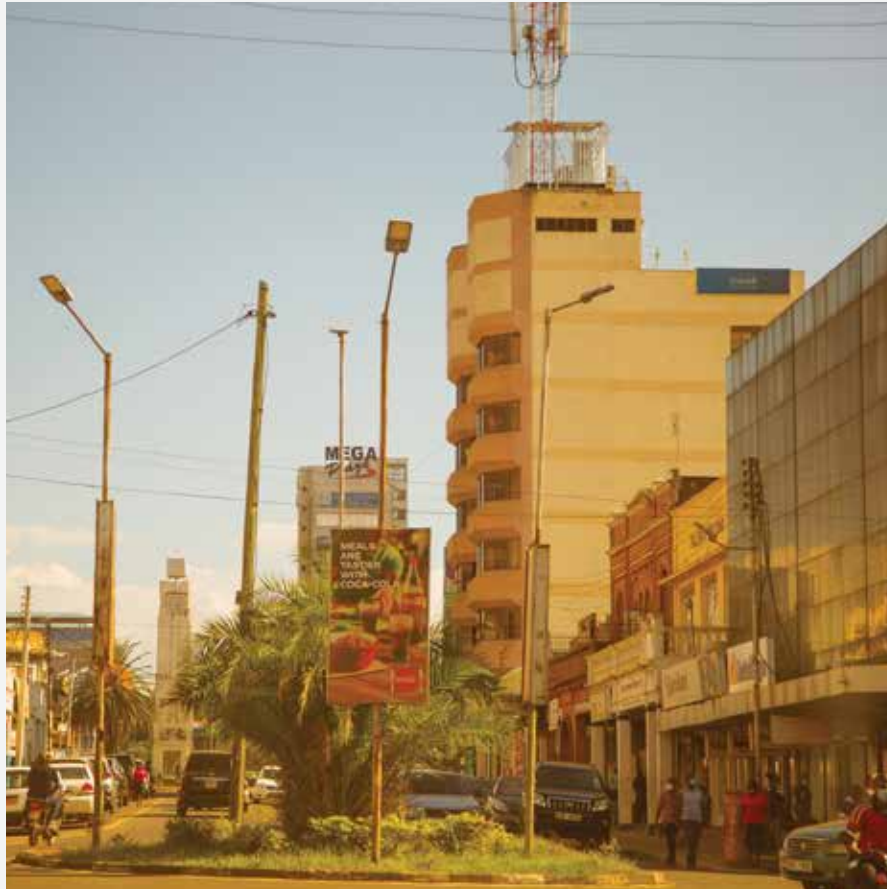
Kisumu city is one of the only two cities in the world (Nairobi being the other), with natural game parks within proximity to the Central Business District. Dunga Beach, a Wetland five kilometers from the Central Business District is known for its unique ecological attractions due to its rich biodiversity. It is home to about 800 bird species and is recognized as an Important Bird Area (IBA) and place of international importance for bird conservation. The beach is also a fish landing site creating a fish trading ecosystem supporting hundreds of fisherfolk. The city has a developed hospitality industry that ensured that it is the hospitality hub of the western Kenya tourism circuit.

## Transport

### Air Transport

Kisumu is served by Kisumu International Airport with regular flights to and from Nairobi and Mombasa. The airport has the capacity to receive direct flights from international routes. It has positioned itself to uptake increased trade brought about the re-created and expanded East African Community, both in passenger and cargo services.





## Road Transport

The city which is positioned on an international transport intersection is connected by highway trunk roads of international standards and quality. It connects Busia at the border of Uganda, Nakuru, Nairobi, and on to Mombasa and Isebania on the Tanzania border via highway trunk roads. The city is also served internally by paved roads of international standards.



## Water Transport

Ferries and water Buses operate on Lake Victoria linking islands and cities of Mwanza and Bukoba in Tanzania and to Entebbe, Port Bell and Jinja in Uganda. The refurbishment of Kisumu Port recently undertaken by the Republic of Kenya repositions the lake as an avenue of maritime transport.

## Rail Transport

The Standard gauge railway has been built from Mombasa to Naivasha where it is hoped to connect to the meter gauge to Kisumu currently under refurbishment. A new passenger terminus is also being built in the city with service of the railway service expected to resume soon.



## Activities

One of the hallmark activities for any traveler to Kisumu is watching the picturesque sunset over the waters of Africa's largest freshwater lake. There are many memorable ways to spend 'golden hour' including:

### Sunset Cruise along the shores

Take a private sunset cruise along the shores for a different perspective on the exceptional hues of the Island light that comes to life at dusk. Drop anchor just offshore from Hippo Point as the sun is about to dip into the lake and lean back on the comfortable loungers on the yachts. Sip on a refreshing gin and tonic or an ice-cold Soda and bite on some tasty appetisers while the waters guide you into the evening.

Take a private sunset cruise along the shores for a different perspective on the exceptional hues of the Island light that comes to life at dusk. Drop anchor just offshore from Hippo Point as the sun is about to dip into the lake and lean back on the comfortable loungers on the yachts. Sip on a refreshing gin and tonic or an ice-cold Soda and bite on some tasty appetisers while the waters guide you into the evening.

### Sunset Champagne

You will find one of Kisumu City's best-kept sunset secrets at a lesser-known lookout point and a lakeside joint called Dunga Hill Camp. Located along the Shores OF Lake Victoria on your way to Dunga beach, it has endless views across the lake and provide diverse views of sunset with soft pastel skies. Comfy cushions can be provided together with a generously stocked champagne bucket upon request. Food is also prepared as the sky turns to inky shades of blue and the first stars begin to appear.

### Golfing on the shores of L. Victoria

Located along the shores of the second largest freshwater lake in the world, 5 minutes from Kisumu City CBD and 3 minutes from Kisumu international airport, Nyanza Golf Club is one of its kind in the region. This Golf courses provides a great level of service, but nonetheless it offers a strong connection to the region as its adjacent to Lake Victoria. With the Lake Victoria to its East, Kisumu CBD just across the lake, and the Beautiful Riat Hills on one the North, every hole offers stunning Lake and bushland views.







Let's go  
Wild



## Hiking in the Wild at Ndere Island National Park

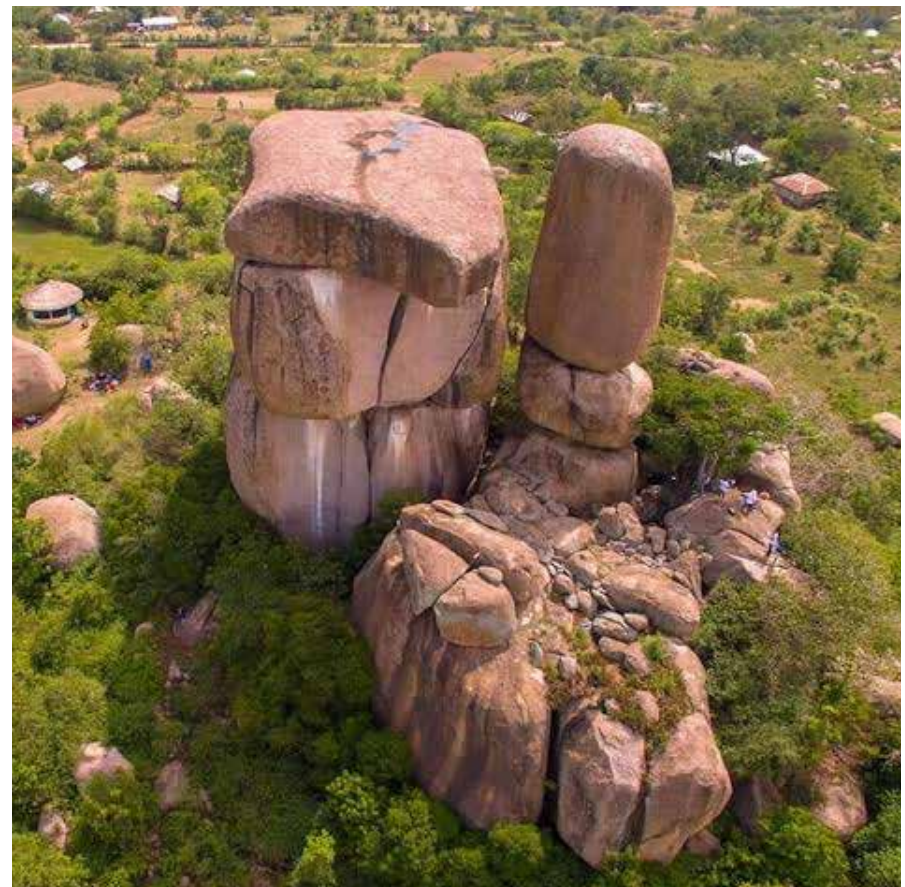
Located on Lake Victoria, this island is a haven for birds. Covered mostly in grassland, Ndere Island provides beautiful scenic views of the Homa hills to the south, Mageda Island to the east and the glimpses of Kampala in Uganda beyond the southwest horizon. The lake shore supports a wide variety of animals including hippos, monitor lizards, Nile crocodiles, several fish species, snakes, baboons, impalas, the rare sitatunga antelopes, water bucks, zebras, and warthogs. Over 100 different species of birds can be seen here including African fish eagles, black headed gonoleks and grey headed kingfishers. The Island has paths within that lead to its peak that is positioned as a watchtower for the entire Island.

## The Stone of the First Wife - Kit Mikayi

A rock formation - a Tor - around 50 m high situated about 29 km west of Kisumu town in Kisumu County, Kenya. It is about 1 km from the Kisumu-Bondo Road. It consists of three very large stones on top of each other. In Luo tradition, it is said that Kit Mikayi is where the first woman lived. Kit Mikayi is Dholuo for "the stones of the first wife."

It is a wonderful place to take the family. Incredible outcrop of rocks with a view at the top that has to be seen to be believed. The story of how Kit Mikayi got its name "Rock of the First Wife" is both humorous and interesting. Climbing to the top can be a challenge sports wise but it's worth it. The rock is also the chosen Prayer retreat of "Legio Maria" Church. There are small caves within, where shrines have been erected and candles for prayers are ever lit. You can listen to Luo traditions of the family house and familial set up. At the site, guests are allowed to dress up and participate in traditional dances that are performed by the local Community Based Organization on the ground.

In 2019, The Kit Mikayi shrine was inscribed on the UNESCO's List of elements of Intangible Cultural Heritage in Need of Urgent Safeguarding at the 14th Intergovernmental Committee for the Safeguarding of the Intangible Cultural Heritage in Bogota Colombia.





## The Board Walk on Dunga Beach

The Dunga beach area is an extensive marshland characterized by tall reed plants. A big portion of the land has been encroached by human development. Fortunately, a considerable acreage has been set aside by the County Government of Kisumu for conservation. If you are seeking a family friendly place to relax or to enjoy outdoor picnic, then this is a place worth checking out. Experience a walk on the boardwalk through the lush and serene environment while also encountering a variety of fauna such as Sitatungas and bird life and in the evening, you may get to spot Hippos enjoying a sun-downer. There is a small Museum which has a collection of wares and crafts made by the local Community Based Organization.

## LIST OF HOTELS

Jumuiah Resort	Gumbi Rd, Kisumu
Ciala report	Daraja Mbili, Kisumu
Grand Royal Swiss	Riat, Kisumu-Kakamega Highway
The Vic Hotel	Mega City, kisumu.
Milimani Beach Resort	Milimani kisumu
Nyanza Golf club	Lolwe Drive, Kisumu
Best Western	Kakamega road
Vitoria Suites	Off Tom Mboya Road, Milimani, Kusumu
MillsView Hotel	Along Achieng Oneko Road, Kisumu,
Siaya Country club	Banana Centre, Along Siaya-Rangala Road
Accacia Premier	Kisumu Town
Sovereign Suite	Lolwe Drive, kisumu
Shammah Hotel	Aga Khan Rd, Kisum



## CONTACTS

Chief Executive Officer  
Kenya Tourism Board  
P.O. Box 30630 00100 Nairobi  
Email: [info@ktb.go.ke](mailto:info@ktb.go.ke)  
[www.magicalkenya.com](http://www.magicalkenya.com)